



Open House 2023-2024

Welcome 4th grade
families!

Please sign in



4th Grade Contact

Romano- romanomb@gm.sbac.edu

Brown- brownh@gm.sbac.edu

Rivera- riveratl@gm.sbac.edu

Medeiros- medeirosmn@gm.sbac.edu

Johnson- johnsonkn@gm.sbac.edu

Class Website



- Our class website is an excellent resource!
- Access to
 - Newsletters, Fluency
 - Daily class schedule
 - Weekly specials schedule
 - Class calendar
 - Pictures!

Homeroom Class Schedule

Mon., Tues., Thurs., Fri.

7:45-8:05	Indoor Recess
8:05 – 9:05	Math
9:05-10:05	Science
10:05 – 10:35	Recess
10:35 – 11:05	Lunch
11:05 – 1:05	ELA
1:05 – 1:50	Specials
1:52	Dismissal

Wednesday

7:45-8:45	Math
8:35 – 9:40	Science
9:40 – 11:30	ELA
11:30 – 12:00	Specials
12:00 – 12:30	Lunch
12:37	Dismissal

Afternoon Class Schedule

Mon., Tues., Thurs., Fri.

7:45-8:05	Indoor Recess
8:05 – 10:05	ELA
10:05 – 10:35	Recess
10:35 – 11:05	Lunch
11:05 – 12:05	Science
12:05 – 1:05	Acc. Math
1:05 – 1:50	Specials
1:52	Dismissal

Wednesday

7:45 – 9:40	ELA
9:40 – 10:30	Science
10:30 – 11:30	Acc. Math
11:30 – 12:00	Specials
12:00 – 12:30	Lunch
12:37	Dismissal

Snack Schedule

- 🎬 Wednesdays @ 9:00am
- 🎬 Individual snacks
- 🎬 Class snack donations (21): granola or cereal bars, fruit snacks, crackers

Homeroom Specials Schedule

- 🎬 Updated each 9 weeks
- 🎬 Schedule and Specials teacher contact information is on our website
- 🎬 [Teacher info](#)
- 🎬 First 9 Weeks-
 - 🎬 Monday: PE, Tuesday: Media Center, Wednesday: Music, Thursday: Art, Friday: Computer Lab



Visitor and Volunteer Guidelines

- ⦿ Visitors- pre-arranged or by appointment
- ⦿ Must check in to the front office
- ⦿ An up-to-date volunteer application must be on file (can find on our class website)



Field Trips

(Dates on class calendar)

- 🎬 November 3rd – Florida Museum of Natural History
- 🎬 January 12th – Saint Augustine (Trolley Tour, Pirate Museum, Castillo de San Marco)
- 🎬 Class shirts- orders and money due October 20th

St. Augustine Payment Plan

- ⦿ Letters in folders today
- ⦿ Must turn in completed field trip form with first payment
- ⦿ \$100 for students
- ⦿ \$110 for chaperones (will not pay until chosen in December)

St. Augustine Info

The cost of the trip is \$100 for students and \$110 for chaperones. We are offering a payment plan option for students. There is a limit of 5 chaperones per class. *Chaperones will not pay until the selection is made by December 18th.* Please note that chaperones must have current volunteer application on file and ride to bus to and from St. Augustine.

Payment Plan Dates and Amounts:

9/29/23- \$25 for students

10/27/23- \$25 for students

11/17/23- \$25 for students

12/15/23- \$25 for students

We understand that your family may need some extra time to gather these funds, and we want to provide you with plenty of time. Please send the exact amount of cash or a check to school in an envelope with your child's name by the payment dates. You are also welcome to send the full amount or larger amounts if you prefer.

St. Augustine Payment Plan

⊗ Payment Plan Dates and Amounts:

9/29/23- \$25 for students

10/27/23- \$25 for students

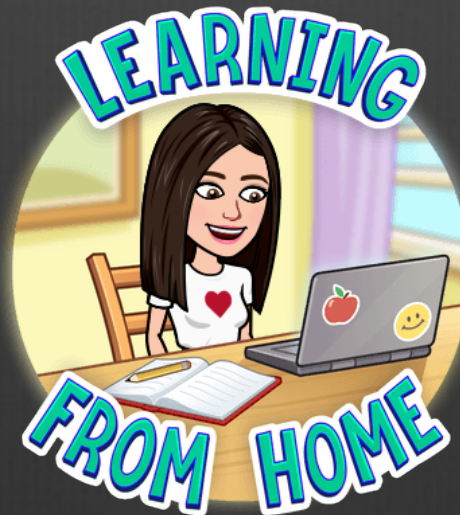
11/17/23- \$25 for students

12/15/23- \$25 for students

***Optional- may pay full amount at any time
before 12/15/23**

myPortal Access

- 🎬 Online Resources
- 🎬 Student mail
- 🎬 Log in credentials in planner



Grading Criteria

•ENGLISH/LANGUAGE ARTS (ELA)

- Unit Assessments--30%
- Writing Unit Assessments--15%
- Quizzes--25%
- Classwork--20%
- Homework-- 10%

•MATH

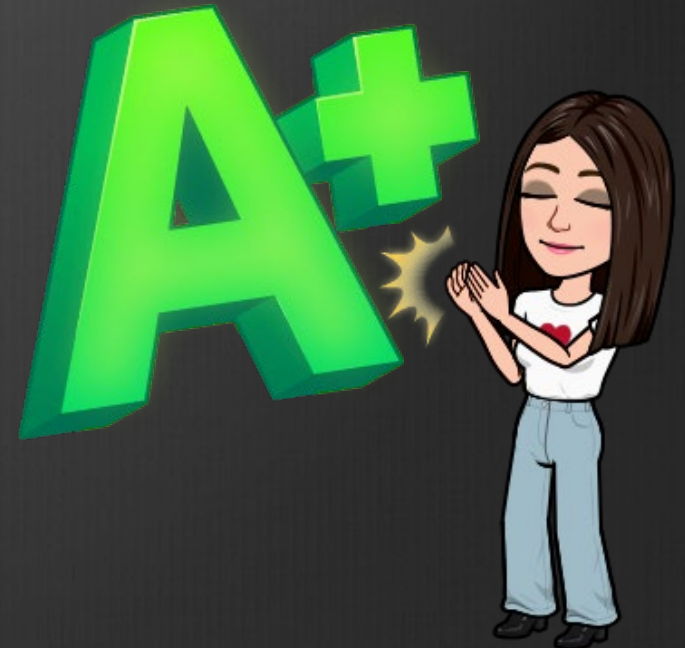
- Assessments--45%
- Mini-assessments / Quizzes--20%
- Classwork--25%
- Homework-- 10%

•SCIENCE

- Unit Assessments--40%
- Labs (Inquiry)--30%
- Journals/Classwork--30%

•SOCIAL STUDIES

- Assessments--40%
- Classwork--60%



Grading Criteria (continued)

Grading Scale 3-5

Letter Grade	Percent Achievement	Grade Points	Progress Level
A	90 - 100	4.0	Outstanding
B+	87 - 89	3.0	
B	80 - 86	3.0	Above Average
C+	77 - 79	2.0	
C	70 - 76	2.0	Average
D+	67 - 69	1.0	
D	60 - 66	1.0	Lowest Acceptable

Homework Policy

Reading: Reading homework comes as a stapled packet on the first day of the week and is due the following first day of the week.

The packet includes:

- Fluency page (this passage should be read **out loud** at home daily)
- Reading log
- Comprehension OR Grammar pages

Homework Policy

Math: Daily homework is sent home after each math lesson, excluding Fridays and assessment days

Science, Social Studies, and Writing:

Assignments or projects will be assigned throughout the year as needed. Due dates will be written on the assignment and rubrics will be attached.

Homework Policy

- Homework will be graded on completion.
- Incomplete homework will receive a lower grade. When turned in late, homework will lose 10% every day.
- After 5 days, without an excused absence, homework will get zero credit.

Morning Procedures

- Student drop off no earlier than 7:15 am
- Bell rings at 7:39; tardy bell 7:45**
- Breakfast in cafeteria
- Water *only* in quad/classrooms

Student Planners and Communication Folders

Students:

- Copy learning targets and reminders daily as part of morning procedures
- Take home each night, get signed, and bring back to school each day

Families:

- Check planners and folders each night
- Initial each night (bottom corner)
- May use to communicate with teacher
- Newsletters and practice for fluency hot read in folders

Get Involved! Stay Involved!!

Parent involvement is THE KEY to student success!

- ⊗ Use the folder and **planner** as a tool to stay informed and involved with your child's school
- ⊗ Contact me any time! Call the school or email.

Other ideas:

- Join **PTA**- Membership forms at sign in table and official PTA table down the hall (NEW online portal this year!)
- Attend on campus activities!
- Visit our class [Website!](#)

Title 1 Resources

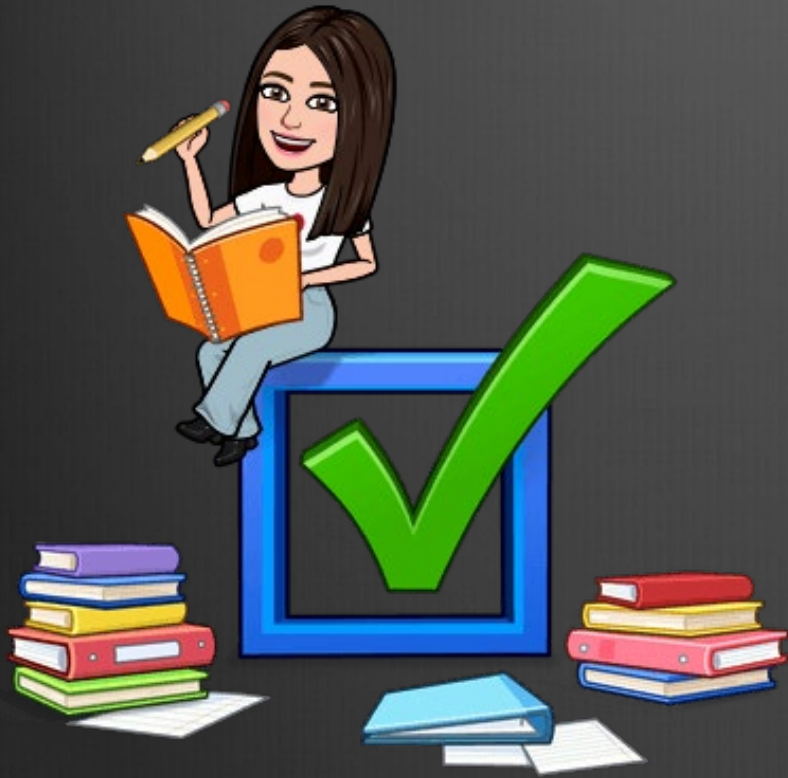
Our school has several great academic resources available for checkout to families!

If you are interested, please contact Tristin Ballentine:

ballentinetl@gm.sbac.edu

PBIS

- ⊙ Positive Behavior Intervention System
- ⊙ NEW! Wow Board (class, lunch, and specials)
- ⊙ Quarterly events, PBIS store, Got Caught Slips, Norton Bucks
- ⊙ Class Incentives- marble jar, desk pets, lunch bunch



FAST Assessment Overview

WHO is being assessed?

⦿ All grade levels!

⦿ Progress monitoring- 3 time a year

⦿ Computer based

When Are the Tests?

Dates are Tentative

- Beginning of the Year-
 - Math: August 29th
 - ELA: August 30th
- Middle of the Year- December
- End of the Year- May



Important to Note

- First year/baseline
- Progress monitoring
- Assessments unique to each student
- Growth is key

How can you help?

- 🎬 Encourage your child to **read** for pleasure every day. Help your child **master basic math facts** in addition, subtraction, *multiplication* and division.
- 🎬 Read at home every night.
- 🎬 Make it **positive!** “Show what you know!”

Thank you for attending!

**The floor is open for
questions!**

